

# MONTHLY MEMBERSHIP PROGRESS REPORT

LOCATION INDIA

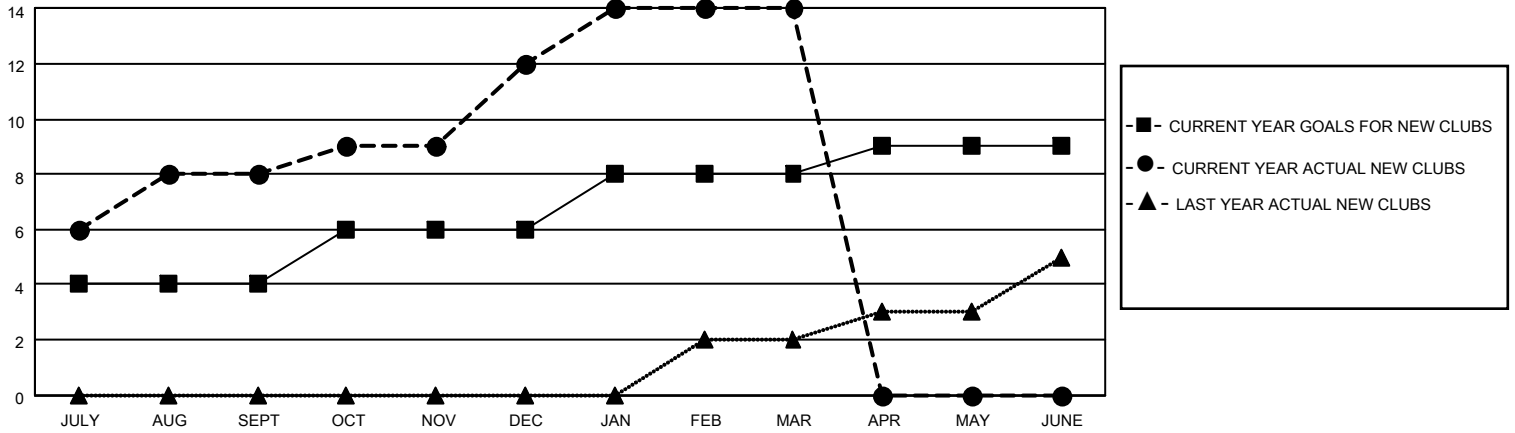
District 324B1

Results as of: 3/31/2021

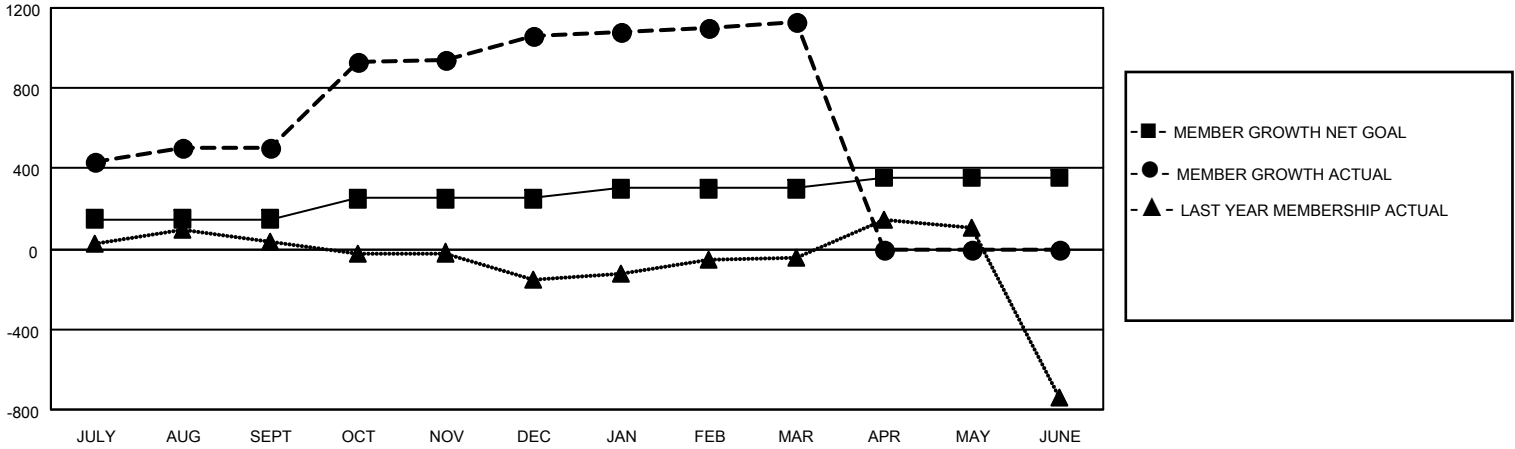
Clubs			
RESULTS FOR 2020-2021			
QUARTER	NEW CLUB GOAL	NEW CLUBS	DROPPED CLUBS
JULY/AUG/SEPT	4	8	0
OCT/NOV/DEC	2	4	0
JAN/FEB/MAR	2	2	0
APR/MAY/JUNE	1	0	0

Members			
RESULTS FOR 2020-2021			
QUARTER	MEMBER GROWTH NET GOAL	MEMBER GROWTH ACTUAL	DROPPED MEMBERS ACTUAL (including transfers)
JULY/AUG/SEPT	150	736	86
OCT/NOV/DEC	100	848	57
JAN/FEB/MAR	50	268	47
APR/MAY/JUNE	50	0	0

**GOALS AND ACTUAL NEW CLUBS CUMULATIVE**



**GOALS AND ACTUAL MEMBERS CUMULATIVE**



DROPPED CLUBS: 0
------------------

95 CLUBS OF 115 ADDED 1 OR MORE NEW MEMBERS

<u>GENDER DISTRIBUTION</u>	
MALE	5,387 (66.09%)
FEMALE	2,764 (33.91%)

<u>DROPPED MEMBERS</u>	
DECEASED	7
CLUB CANCELLED	0
OTHER	183
<b>TOTAL</b>	<b>190</b>

[CLICK HERE FOR CUMULATIVE MEMBERSHIP DATA](#)

TOTAL FAMILY UNIT MEMBERS	4,719
FAMILY MEMBERS PAYING HALF DUES	2,882